

# Chapter 2

## Application Layer

### A note on the use of these Powerpoint slides:

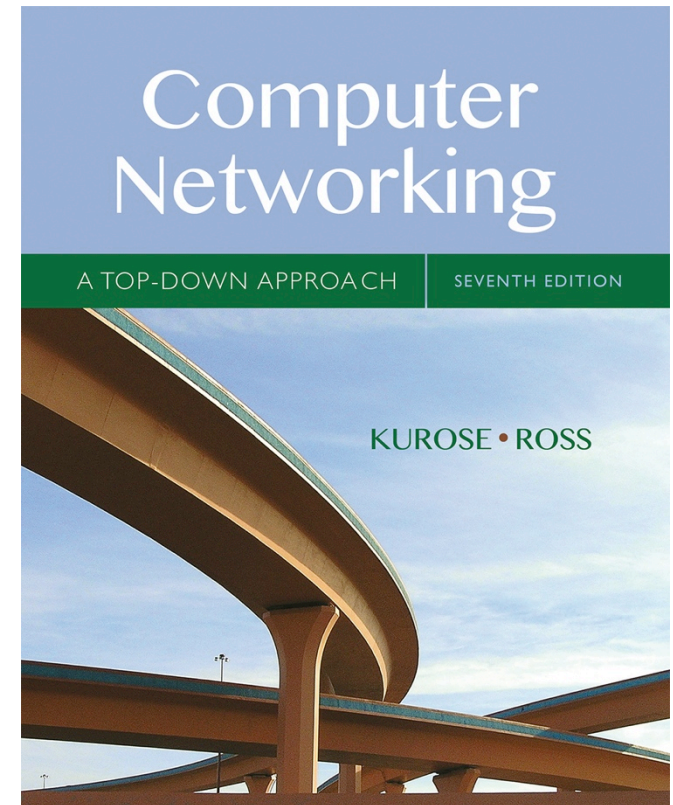
We're making these slides freely available to all (faculty, students, readers). They're in PowerPoint form so you see the animations; and can add, modify, and delete slides (including this one) and slide content to suit your needs. They obviously represent a *lot* of work on our part. In return for use, we only ask the following:

- If you use these slides (e.g., in a class) that you mention their source (after all, we'd like people to use our book!)
- If you post any slides on a www site, that you note that they are adapted from (or perhaps identical to) our slides, and note our copyright of this material.

Thanks and enjoy! JFK/KWR

© All material copyright 1996-2016

J.F Kurose and K.W. Ross, All Rights Reserved



## *Computer Networking: A Top Down Approach*

7<sup>th</sup> edition

Jim Kurose, Keith Ross

Pearson/Addison Wesley

April 2016

# Chapter 2: outline

2.1 principles of network applications

2.2 Web and HTTP

2.3 electronic mail

- SMTP, POP3, IMAP

2.4 DNS

2.5 P2P applications

2.6 video streaming and content distribution networks

2.7 socket programming with UDP and TCP

# Chapter 2: application layer

## our goals:

- conceptual, implementation aspects of network application protocols
  - transport-layer service models
  - client-server paradigm
  - peer-to-peer paradigm
  - content distribution networks
- learn about protocols by examining popular application-level protocols
  - HTTP
  - FTP
  - SMTP / POP3 / IMAP
  - DNS
- creating network applications
  - socket API

# Some network apps

- e-mail
- web
- text messaging
- remote login
- P2P file sharing
- multi-user network games
- streaming stored video (YouTube, Hulu, Netflix)
- voice over IP (e.g., Skype)
- real-time video conferencing
- social networking
- search
- ...
- ...

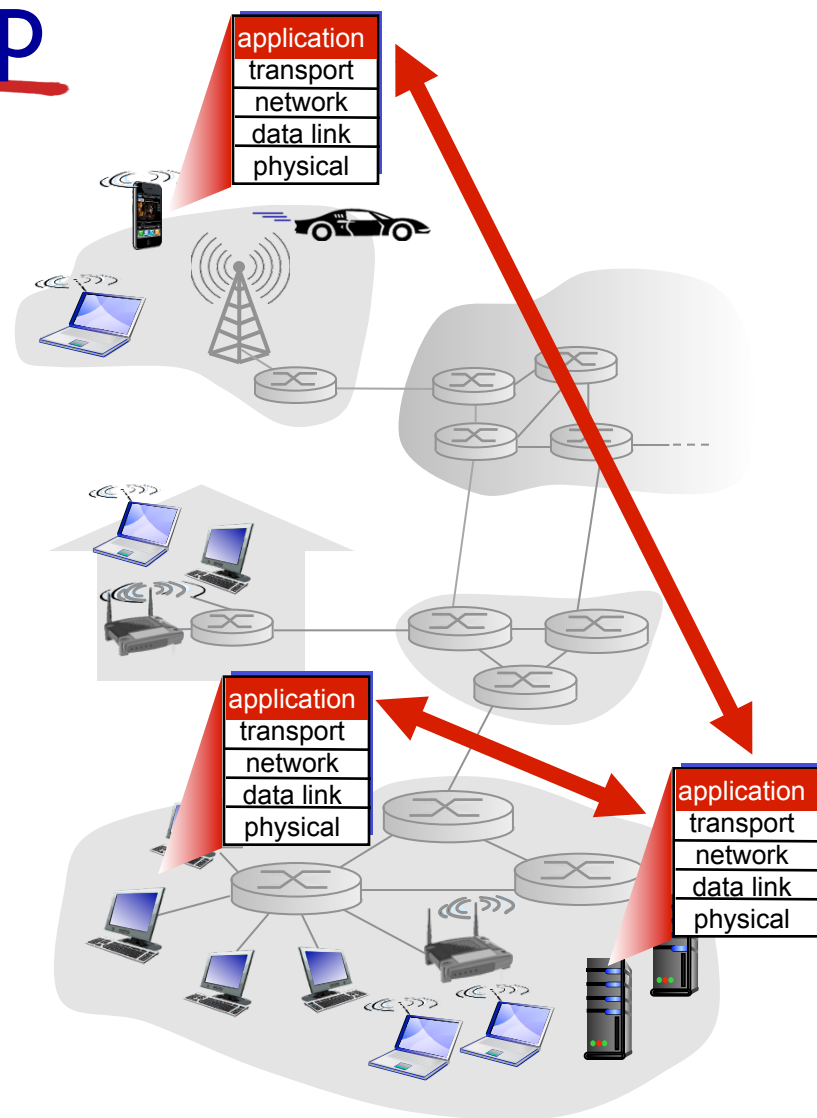
# Creating a network app

write programs that:

- run on (different) *end systems*
- communicate over network
- e.g., web server software communicates with browser software

no need to write software  
for network-core devices

- network-core devices do not run user applications
- applications on end systems allows for rapid app development, propagation

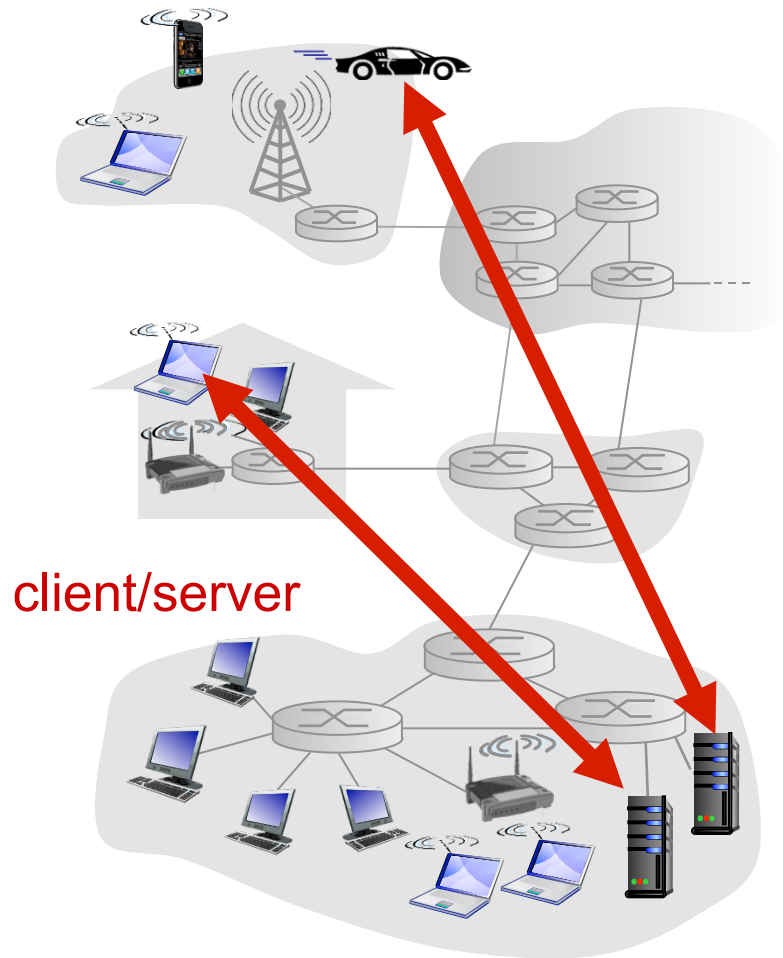


# Application architectures

possible structure of applications:

- client-server
- peer-to-peer (P2P)

# Client-server architecture



## server:

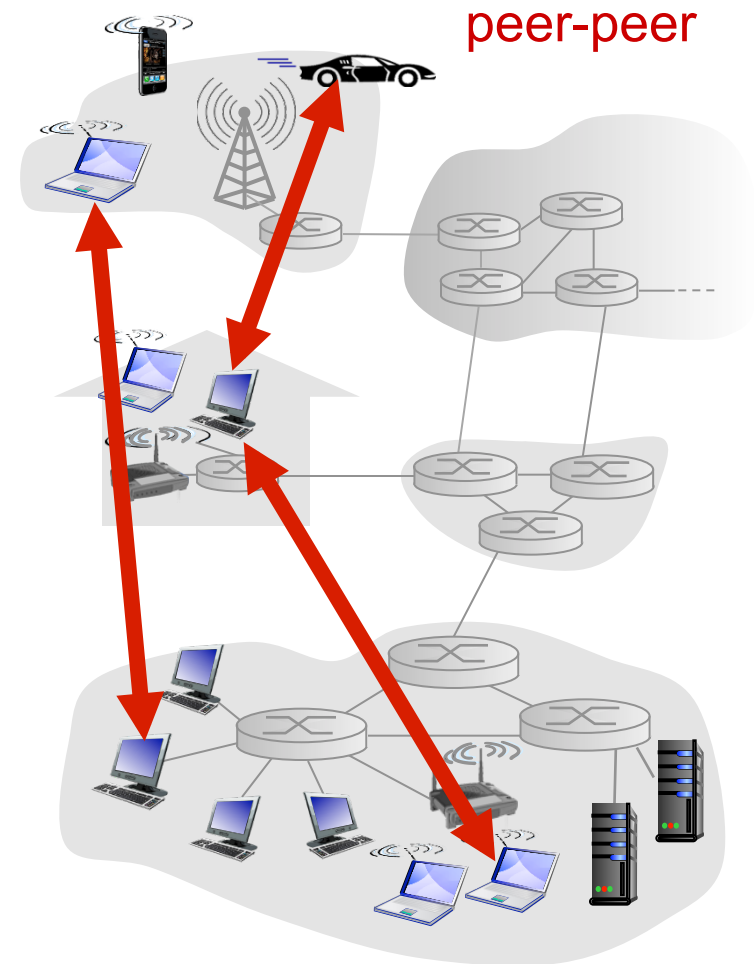
- always-on host
- permanent IP address
- data centers for scaling

## clients:

- communicate with server
- may be intermittently connected
- may have dynamic IP addresses
- do not communicate directly with each other

# P2P architecture

- *no* always-on server
- arbitrary end systems directly communicate
- peers request service from other peers, provide service in return to other peers
  - *self scalability* – new peers bring new service capacity, as well as new service demands
- peers are intermittently connected and change IP addresses
  - complex management





# Processes communicating

*process*: program running within a host

- within same host, two processes communicate using **inter-process communication** (defined by OS)
- processes in different hosts communicate by exchanging **messages**

clients, servers

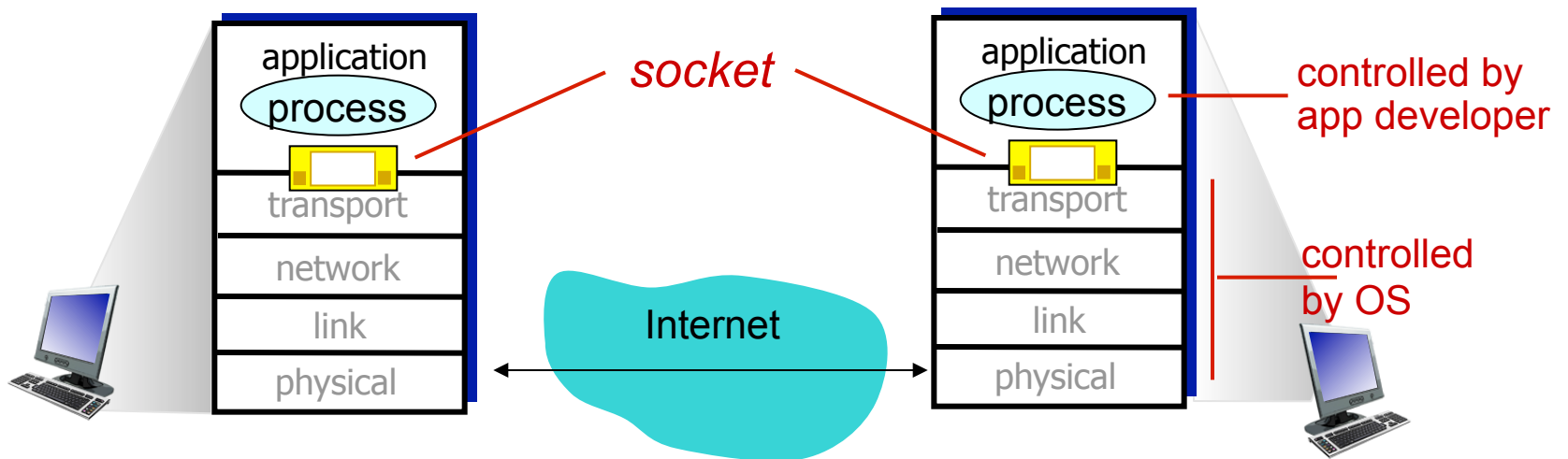
*client process*: process that initiates communication

*server process*: process that waits to be contacted

- aside: applications with P2P architectures have client processes & server processes

# Sockets

- process sends/receives messages to/from its **socket**
- socket analogous to door
  - sending process shoves message out door
  - sending process relies on transport infrastructure on other side of door to deliver message to socket at receiving process



# Addressing processes

- to receive messages, process must have *identifier*
- host device has unique 32-bit IP address
- Q: does IP address of host on which process runs suffice for identifying the process?
  - A: no, *many* processes can be running on same host
- *identifier* includes both **IP address** and **port numbers** associated with process on host.
- example port numbers:
  - HTTP server: 80
  - mail server: 25
- to send HTTP message to gaia.cs.umass.edu web server:
  - **IP address:** 128.119.245.12
  - **port number:** 80
- more shortly...

# App-layer protocol defines

- **types of messages exchanged,**
  - e.g., request, response
- **message syntax:**
  - what fields in messages & how fields are delineated
- **message semantics**
  - meaning of information in fields
- **rules** for when and how processes send & respond to messages

## **open protocols:**

- defined in RFCs
- allows for interoperability
- e.g., HTTP, SMTP

## **proprietary protocols:**

- e.g., Skype

# What transport service does an app need?

## data integrity

- some apps (e.g., file transfer, web transactions) require 100% reliable data transfer
- other apps (e.g., audio) can tolerate some loss

## timing

- some apps (e.g., Internet telephony, interactive games) require low delay to be “effective”

## throughput

- some apps (e.g., multimedia) require minimum amount of throughput to be “effective”
- other apps (“elastic apps”) make use of whatever throughput they get

## security

- encryption, data integrity, ...

# Transport service requirements: common apps

<u>application</u>	<u>data loss</u>	<u>throughput</u>	<u>time sensitive</u>
file transfer	no loss	elastic	no
e-mail	no loss	elastic	no
Web documents	no loss	elastic	no
real-time audio/video	loss-tolerant	audio: 5kbps-1Mbps video: 10kbps-5Mbps	yes, 100' s msec
stored audio/video	loss-tolerant	same as above	
interactive games	loss-tolerant	few kbps up	yes, few secs
text messaging	no loss	elastic	yes, 100' s msec yes and no

# Internet transport protocols services

## TCP service:

- *reliable transport* between sending and receiving process
- *flow control*: sender won't overwhelm receiver
- *congestion control*: throttle sender when network overloaded
- *does not provide*: timing, minimum throughput guarantee, security
- *connection-oriented*: setup required between client and server processes

## UDP service:

- *unreliable data transfer* between sending and receiving process
- *does not provide*: reliability, flow control, congestion control, timing, throughput guarantee, security, or connection setup,

Q: why bother? Why is there a UDP?

# Internet apps: application, transport protocols

<b>application</b>	<b>application layer protocol</b>	<b>underlying transport protocol</b>
e-mail	SMTP [RFC 2821]	TCP
remote terminal access	Telnet [RFC 854]	TCP
Web	HTTP [RFC 2616]	TCP
file transfer	FTP [RFC 959]	TCP
streaming multimedia	HTTP (e.g., YouTube), RTP [RFC 1889]	TCP or UDP
Internet telephony	SIP, RTP, proprietary (e.g., Skype)	TCP or UDP



# Securing TCP

## TCP & UDP

- no encryption
- cleartext passwds sent into socket traverse Internet in cleartext

## SSL

- provides encrypted TCP connection
- data integrity
- end-point authentication

## SSL is at app layer

- apps use SSL libraries, that “talk” to TCP

## SSL socket API

- cleartext passwords sent into socket traverse Internet encrypted
- see Chapter 8

# Chapter 2: outline

2.1 principles of network applications

2.2 Web and HTTP

2.3 electronic mail

- SMTP, POP3, IMAP

2.4 DNS

2.5 P2P applications

2.6 video streaming and content distribution networks

2.7 socket programming with UDP and TCP

# Web and HTTP

*First, a review...*

- *web page* consists of *objects*
- object can be HTML file, JPEG image, Java applet, audio file,...
- web page consists of *base HTML-file* which includes *several referenced objects*
- each object is addressable by a *URL*, e.g.,

`www.someschool.edu/someDept/pic.gif`

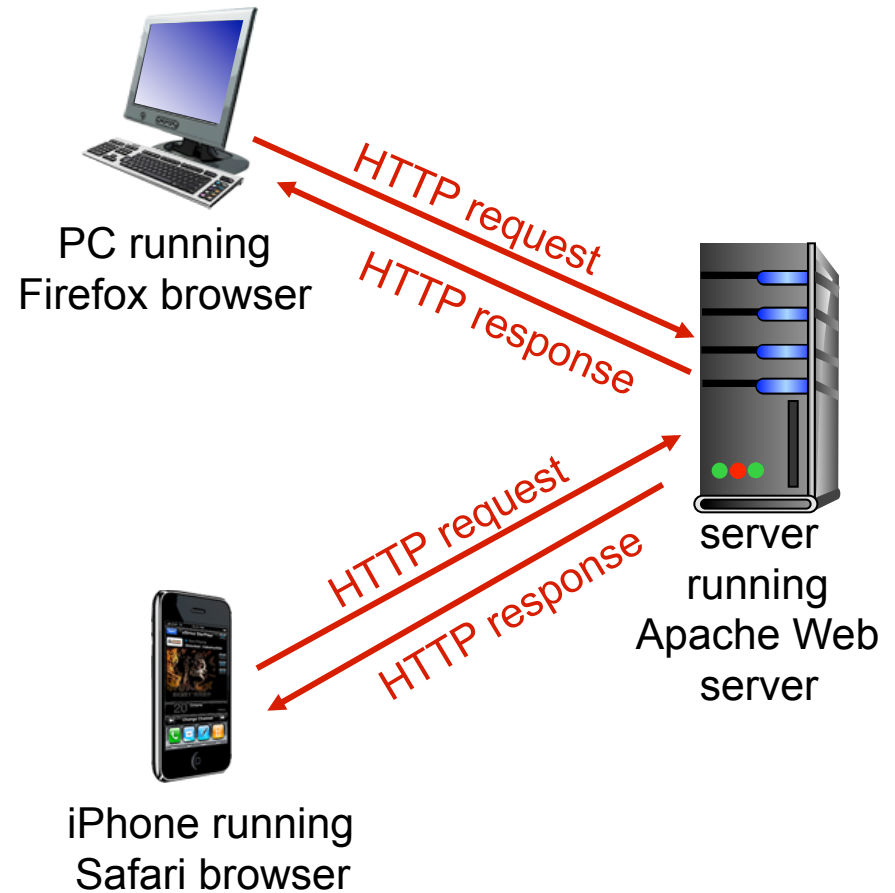
host name

path name

# HTTP overview

## HTTP: hypertext transfer protocol

- Web's application layer protocol
- client/server model
  - *client*: browser that requests, receives, (using HTTP protocol) and "displays" Web objects
  - *server*: Web server sends (using HTTP protocol) objects in response to requests



# HTTP overview (continued)

## *uses TCP:*

- client initiates TCP connection (creates socket) to server, port 80
- server accepts TCP connection from client
- HTTP messages (application-layer protocol messages) exchanged between browser (HTTP client) and Web server (HTTP server)
- TCP connection closed

## *HTTP is “stateless”*

- server maintains no information about past client requests

*aside*

### protocols that maintain “state” are complex!

- past history (state) must be maintained
- if server/client crashes, their views of “state” may be inconsistent, must be reconciled

# HTTP connections

## *non-persistent HTTP*

- at most one object sent over TCP connection
  - connection then closed
- downloading multiple objects required multiple connections

## *persistent HTTP*

- multiple objects can be sent over single TCP connection between client, server

# Non-persistent HTTP

suppose user enters URL:

`www.someSchool.edu/someDepartment/home.index`

(contains text,  
references to 10  
jpeg images)

1a. HTTP client initiates TCP connection to HTTP server (process) at `www.someSchool.edu` on port 80

1b. HTTP server at host `www.someSchool.edu` waiting for TCP connection at port 80. "accepts" connection, notifying client

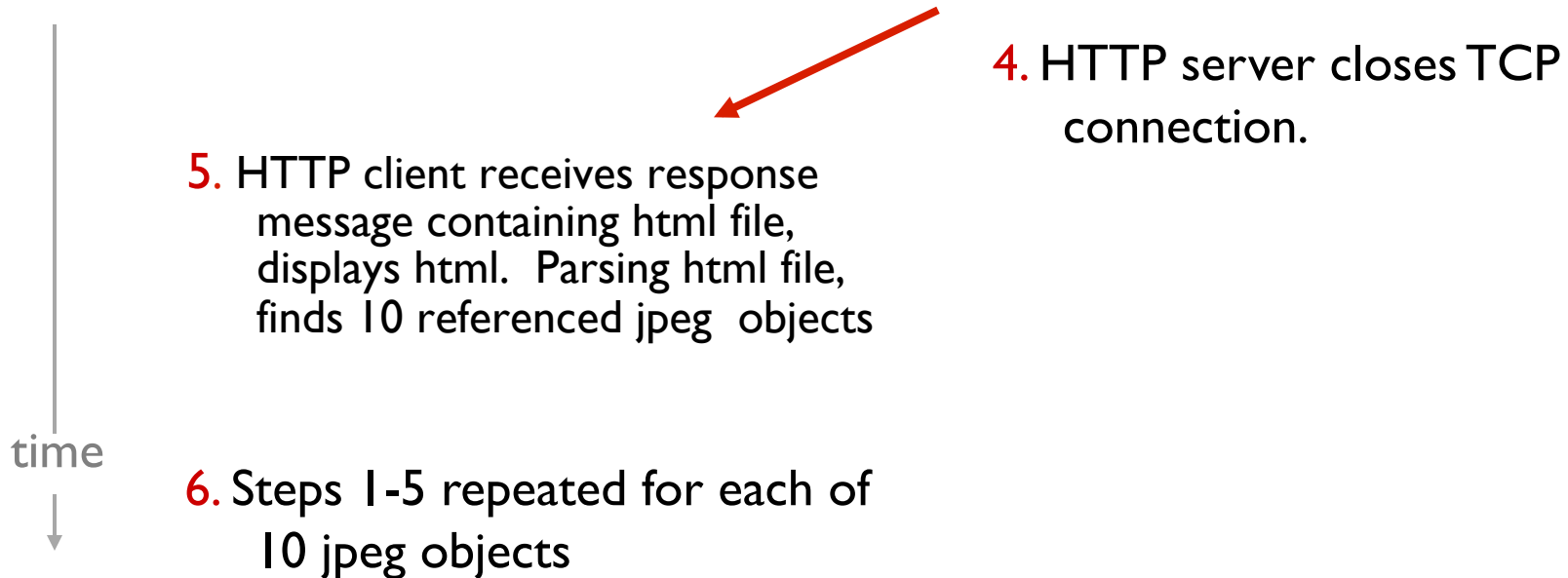
2. HTTP client sends HTTP *request message* (containing URL) into TCP connection socket. Message indicates that client wants object `someDepartment/home.index`

3. HTTP server receives request message, forms *response message* containing requested object, and sends message into its socket

time



# Non-persistent HTTP (cont.)



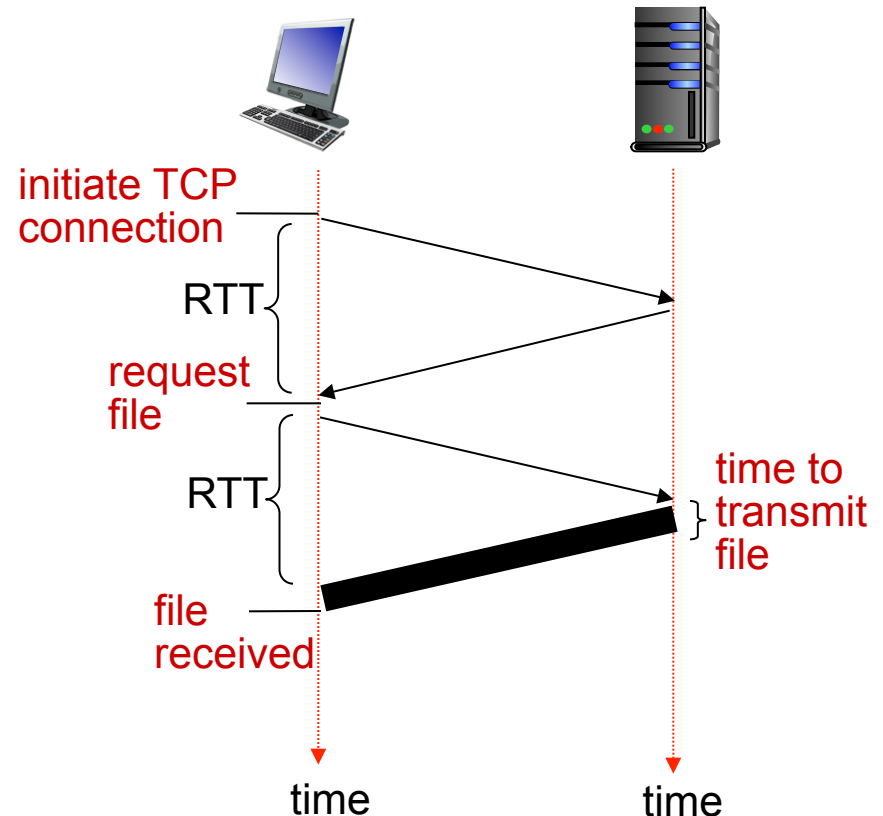


# Non-persistent HTTP: response time

**RTT (definition):** time for a small packet to travel from client to server and back

**HTTP response time:**

- one RTT to initiate TCP connection
- one RTT for HTTP request and first few bytes of HTTP response to return
- file transmission time
- non-persistent HTTP response time =  
 $2RTT + \text{file transmission time}$



# Persistent HTTP

## *non-persistent HTTP issues:*

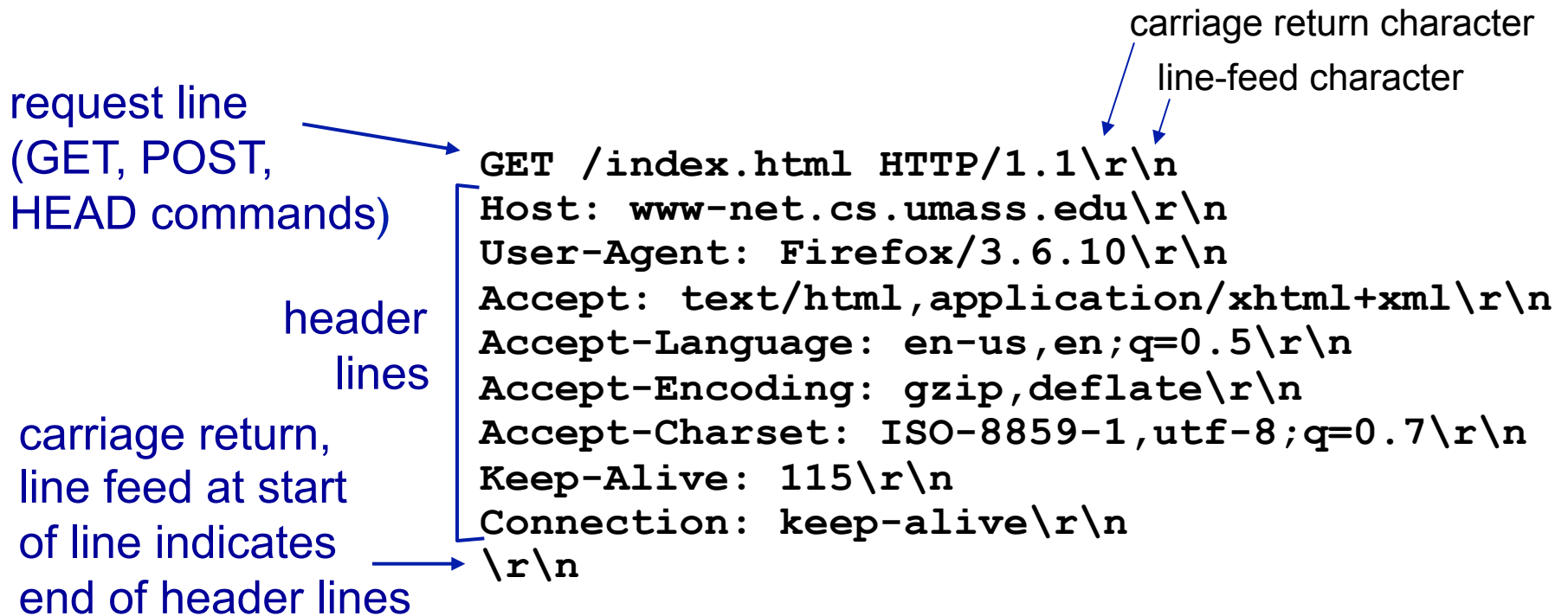
- requires 2 RTTs per object
- OS overhead for *each* TCP connection
- browsers often open parallel TCP connections to fetch referenced objects

## *persistent HTTP:*

- server leaves connection open after sending response
- subsequent HTTP messages between same client/server sent over open connection
- client sends requests as soon as it encounters a referenced object
- as little as one RTT for all the referenced objects

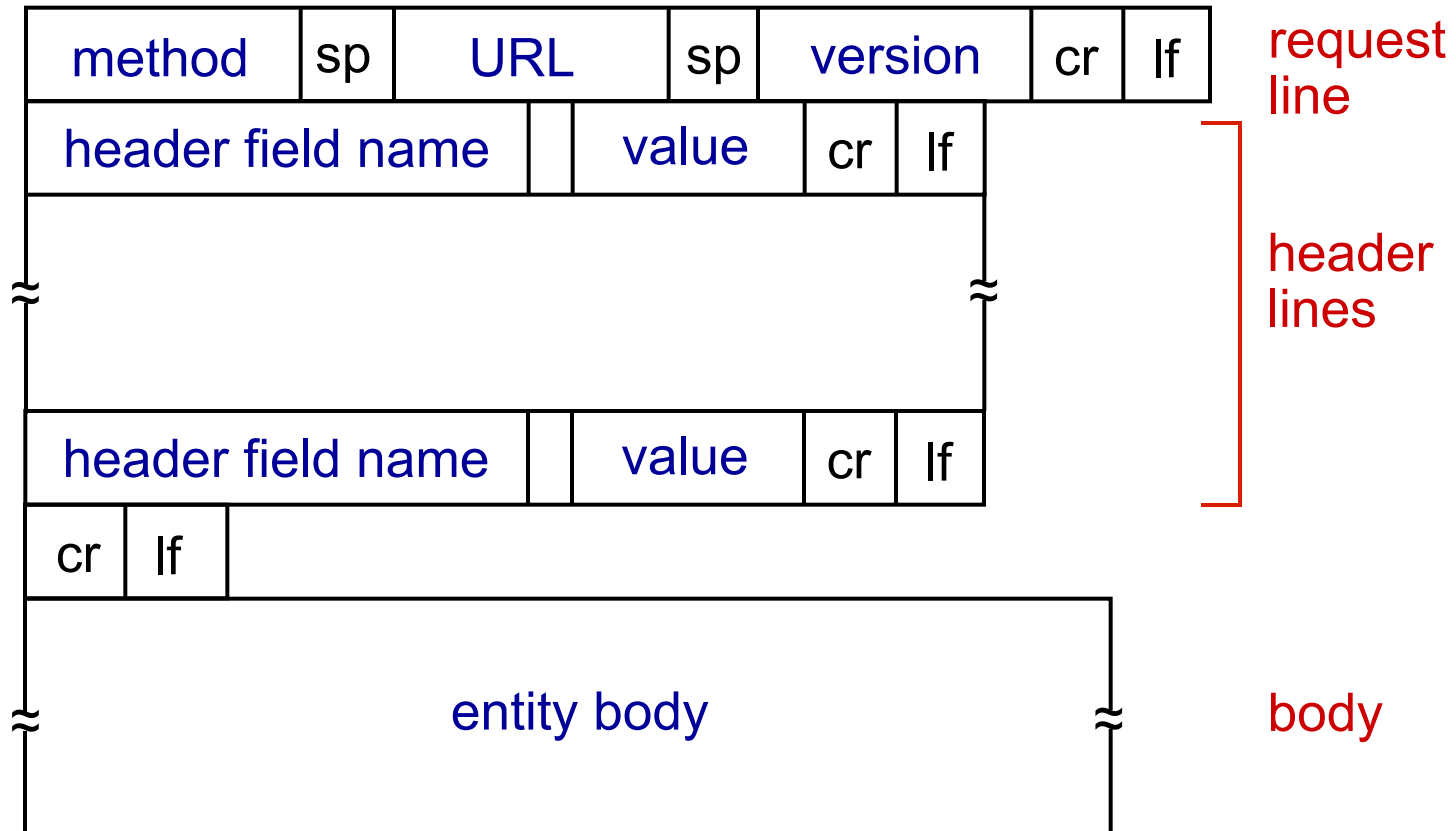
# HTTP request message

- two types of HTTP messages: *request, response*
- **HTTP request message:**
  - ASCII (human-readable format)



\* Check out the online interactive exercises for more examples: [http://gaia.cs.umass.edu/kurose\\_ross/interactive/](http://gaia.cs.umass.edu/kurose_ross/interactive/)

# HTTP request message: general format



# Uploading form input

## POST method:

- web page often includes form input
- input is uploaded to server in entity body

## URL method:

- uses GET method
- input is uploaded in URL field of request line:

`www.somesite.com/animalsearch?monkeys&banana`

# Method types

## HTTP/1.0:

- GET
- POST
- HEAD
  - asks server to leave requested object out of response

## HTTP/1.1:

- GET, POST, HEAD
- PUT
  - uploads file in entity body to path specified in URL field
- DELETE
  - deletes file specified in the URL field

# HTTP response message

status line

(protocol

status code

status phrase)

header  
lines

data, e.g.,  
requested  
HTML file

```
HTTP/1.1 200 OK\r\n
Date: Sun, 26 Sep 2010 20:09:20 GMT\r\n
Server: Apache/2.0.52 (CentOS)\r\n
Last-Modified: Tue, 30 Oct 2007 17:00:02 GMT
\r\n
ETag: "17dc6-a5c-bf716880"\r\n
Accept-Ranges: bytes\r\n
Content-Length: 2652\r\n
Keep-Alive: timeout=10, max=100\r\n
Connection: Keep-Alive\r\n
Content-Type: text/html;
    charset=ISO-8859-1\r\n
\r\n
data data data data data ...
```

\* Check out the online interactive exercises for more examples: [http://gaia.cs.umass.edu/kurose\\_ross/interactive/](http://gaia.cs.umass.edu/kurose_ross/interactive/)

# HTTP response status codes

- status code appears in 1st line in server-to-client response message.
- some sample codes:

## **200 OK**

- request succeeded, requested object later in this msg

## **301 Moved Permanently**

- requested object moved, new location specified later in this msg (Location:)

## **400 Bad Request**

- request msg not understood by server

## **404 Not Found**

- requested document not found on this server

## **505 HTTP Version Not Supported**



# Trying out HTTP (client side) for yourself

1. Telnet to your favorite Web server:

```
telnet gaia.cs.umass.edu 80
```

opens TCP connection to port 80  
(default HTTP server port)  
at gaia.cs.umass.edu.  
anything typed in will be sent  
to port 80 at gaia.cs.umass.edu

2. type in a GET HTTP request:

```
GET /kurose_ross/interactive/index.php HTTP/1.1  
Host: gaia.cs.umass.edu
```

by typing this in (hit carriage  
return twice), you send  
this minimal (but complete)  
GET request to HTTP server

3. look at response message sent by HTTP server!  
(or use Wireshark to look at captured HTTP request/response)

# User-server state: cookies

many Web sites use cookies

*four components:*

- 1) cookie header line of HTTP *response* message
- 2) cookie header line in next HTTP *request* message
- 3) cookie file kept on user's host, managed by user's browser
- 4) back-end database at Web site

**example:**

- Susan always access Internet from PC
- visits specific e-commerce site for first time
- when initial HTTP requests arrives at site, site creates:
  - unique ID
  - entry in backend database for ID

# Cookies: keeping "state" (cont.)

client



server



cookie file



ebay 8734  
amazon 1678

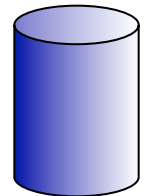
usual http request msg

Amazon server  
creates ID  
1678 for user

usual http response  
**set-cookie: 1678**

create  
entry

backend  
database



usual http request msg  
**cookie: 1678**

cookie-  
specific  
action

access

usual http response msg

one week later:



ebay 8734  
amazon 1678

usual http request msg  
**cookie: 1678**

cookie-  
specific  
action

access

usual http response msg

# Cookies (continued)

## *what cookies can be used for:*

- authorization
- shopping carts
- recommendations
- user session state (Web e-mail)

## *how to keep “state”:*

- protocol endpoints: maintain state at sender/receiver over multiple transactions
- cookies: http messages carry state

aside

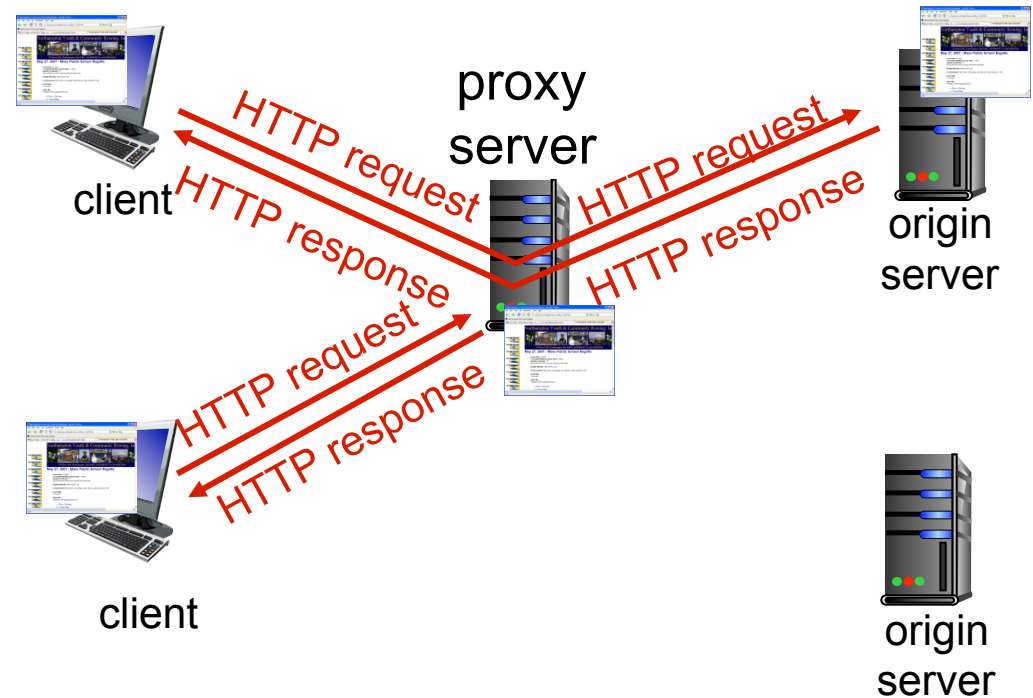
## *cookies and privacy:*

- cookies permit sites to learn a lot about you
- you may supply name and e-mail to sites

# Web caches (proxy server)

**goal:** satisfy client request without involving origin server

- user sets browser: Web accesses via cache
- browser sends all HTTP requests to cache
  - object in cache: cache returns object
  - else cache requests object from origin server, then returns object to client



# More about Web caching

- cache acts as both client and server
  - server for original requesting client
  - client to origin server
- typically cache is installed by ISP (university, company, residential ISP)

## *why Web caching?*

- reduce response time for client request
- reduce traffic on an institution's access link
- Internet dense with caches: enables “poor” content providers to effectively deliver content (so too does P2P file sharing)

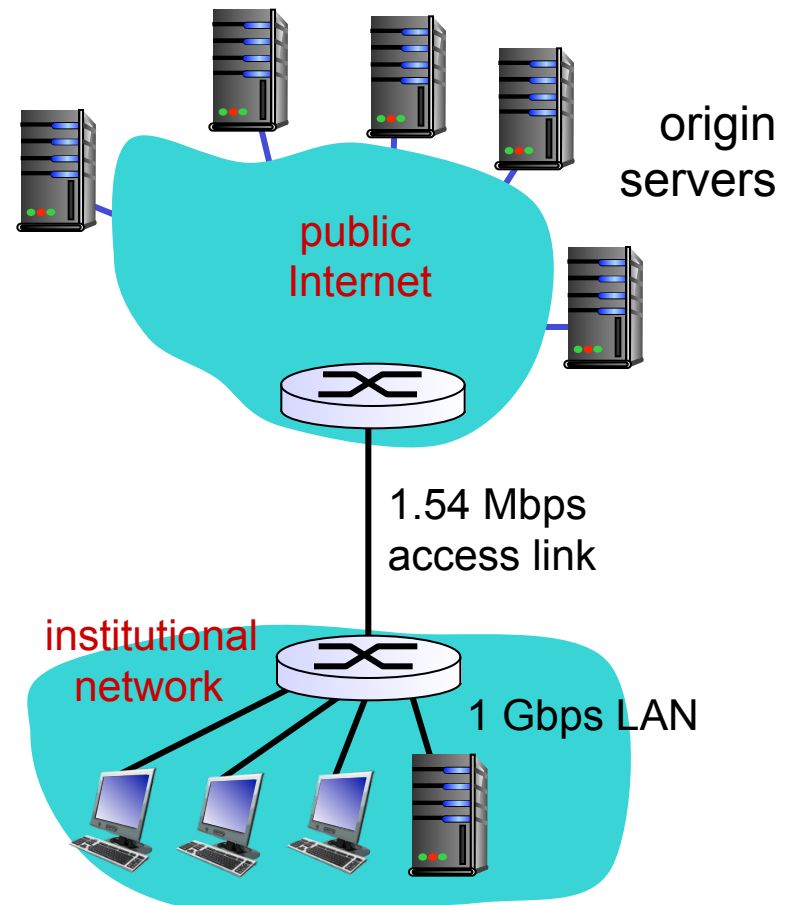
# Caching example:

## *assumptions:*

- avg object size: 100K bits
- avg request rate from browsers to origin servers: 15/sec
- avg data rate to browsers: 1.50 Mbps
- RTT from institutional router to any origin server: 2 sec
- access link rate: 1.54 Mbps

## *consequences:*

- LAN utilization: 15%
- access link utilization = **99%** *problem!*
- total delay = Internet delay + access delay + LAN delay  
= 2 sec + minutes + usecs



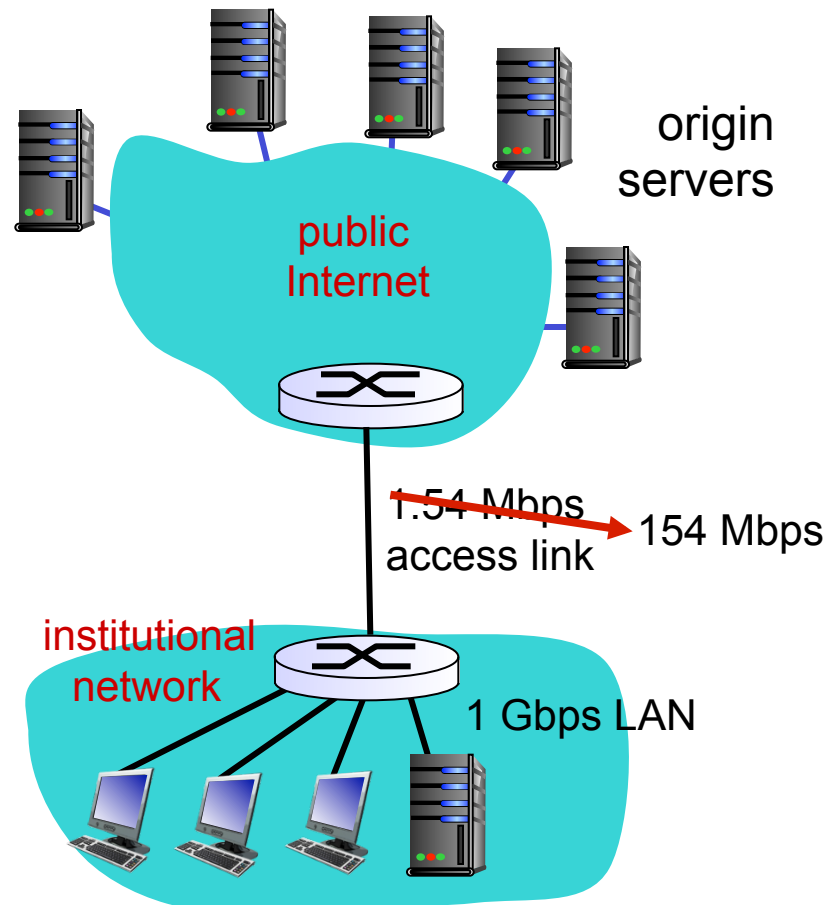
# Caching example: fatter access link

## assumptions:

- avg object size: 100K bits
- avg request rate from browsers to origin servers: 15/sec
- avg data rate to browsers: 1.50 Mbps
- RTT from institutional router to any origin server: 2 sec
- access link rate: ~~1.54 Mbps~~ → 154 Mbps

## consequences:

- LAN utilization: 15%
- access link utilization = ~~99%~~ → 9.9%
- total delay = Internet delay + access delay + LAN delay  
= 2 sec + ~~minutes~~ → usecs  
msecs



**Cost:** increased access link speed (not cheap!)



# Caching example: install local cache

## *assumptions:*

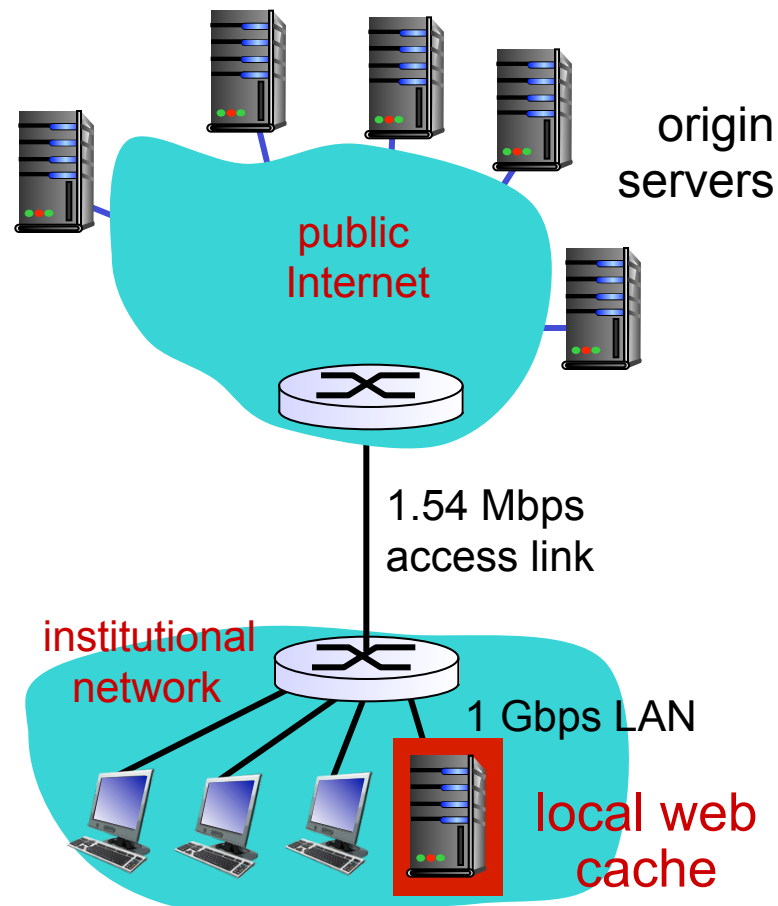
- avg object size: 100K bits
- avg request rate from browsers to origin servers: 15/sec
- avg data rate to browsers: 1.50 Mbps
- RTT from institutional router to any origin server: 2 sec
- access link rate: 1.54 Mbps

## *consequences:*

- LAN utilization: 15%
- access link utilization = ?
- total delay = ?

*How to compute link utilization, delay?*

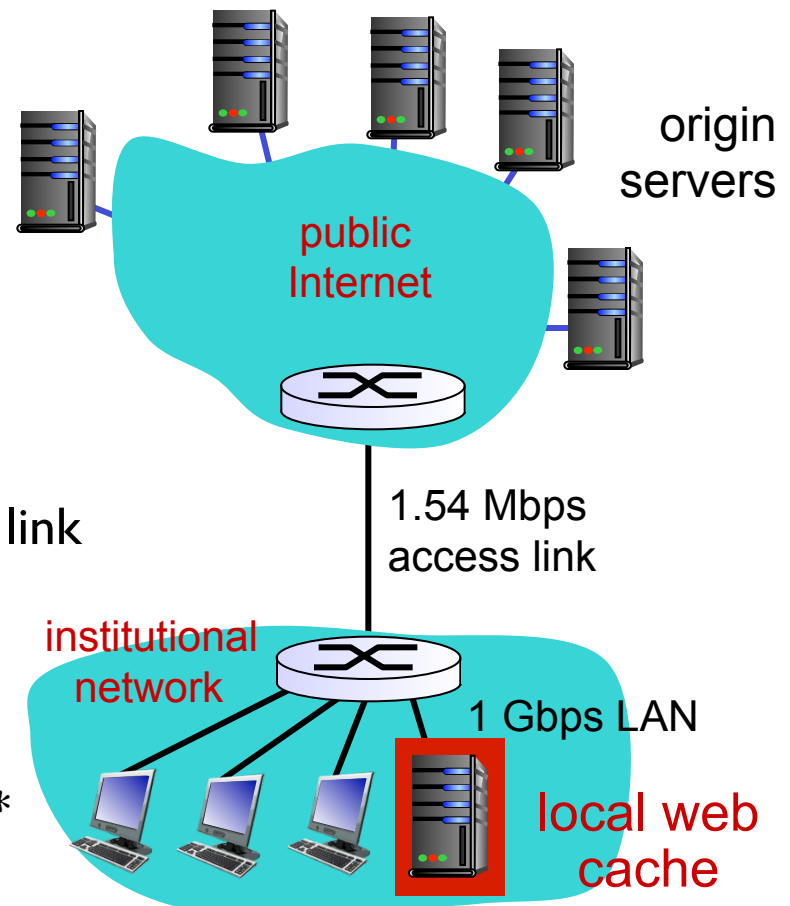
*Cost:* web cache (cheap!)



# Caching example: install local cache

## Calculating access link utilization, delay with cache:

- suppose cache hit rate is 0.4
  - 40% requests satisfied at cache, 60% requests satisfied at origin
- access link utilization:
  - 60% of requests use access link
- data rate to browsers over access link  
 $= 0.6 * 1.50 \text{ Mbps} = .9 \text{ Mbps}$ 
  - utilization =  $0.9 / 1.54 = .58$
- total delay
  - $= 0.6 * (\text{delay from origin servers}) + 0.4 * (\text{delay when satisfied at cache})$
  - $= 0.6 (2.01) + 0.4 (\sim \text{msecs}) = \sim 1.2 \text{ secs}$
  - less than with 154 Mbps link (and cheaper too!)



# Conditional GET

- **Goal:** don't send object if cache has up-to-date cached version

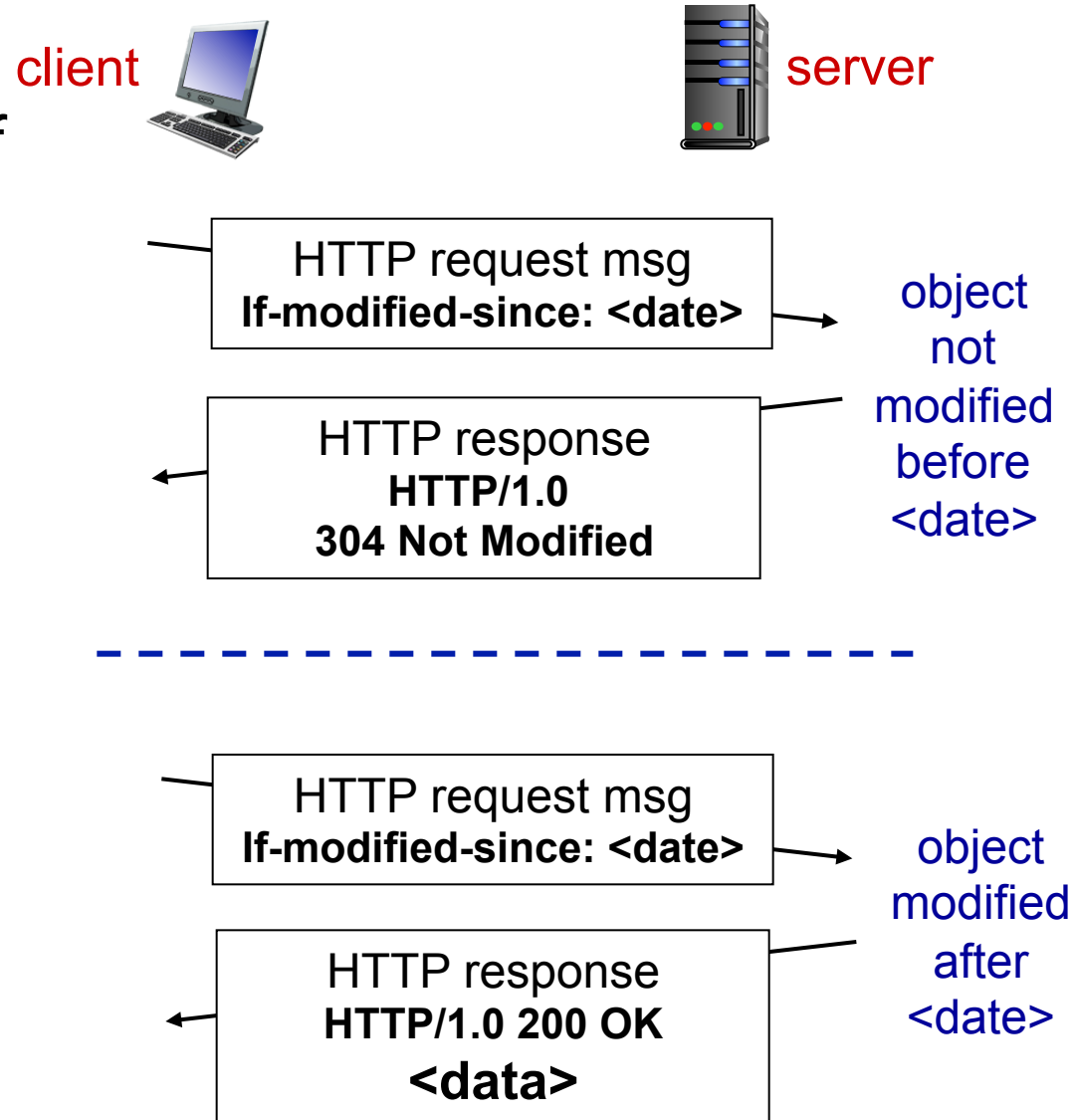
- no object transmission delay
- lower link utilization

- **cache:** specify date of cached copy in HTTP request

If-modified-since:  
<date>

- **server:** response contains no object if cached copy is up-to-date:

HTTP/1.0 304 Not Modified



# Chapter 2: outline

2.1 principles of network applications

2.2 Web and HTTP

2.3 electronic mail

- SMTP, POP3, IMAP

2.4 DNS

2.5 P2P applications

2.6 video streaming and content distribution networks

2.7 socket programming with UDP and TCP

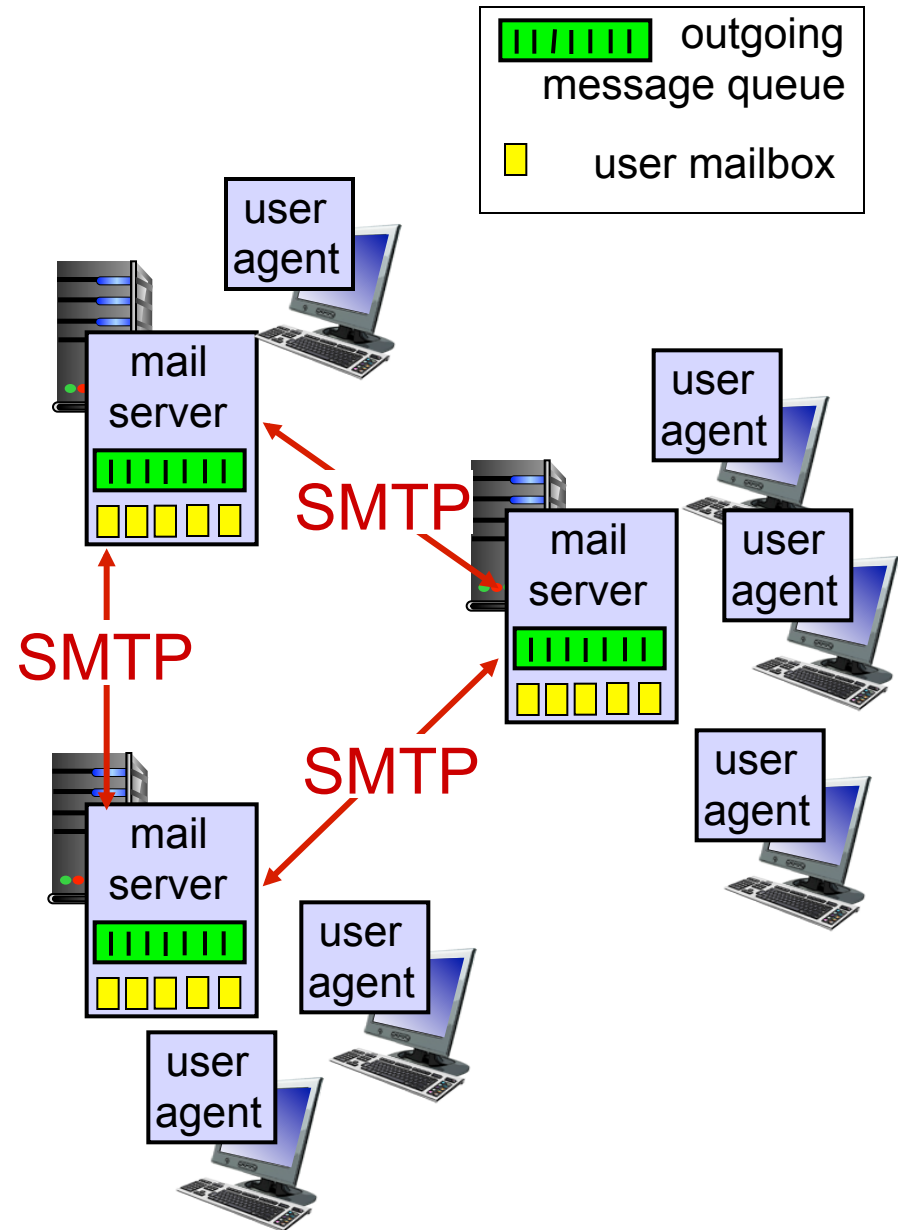
# Electronic mail

## *Three major components:*

- user agents
- mail servers
- simple mail transfer protocol: SMTP

## *User Agent*

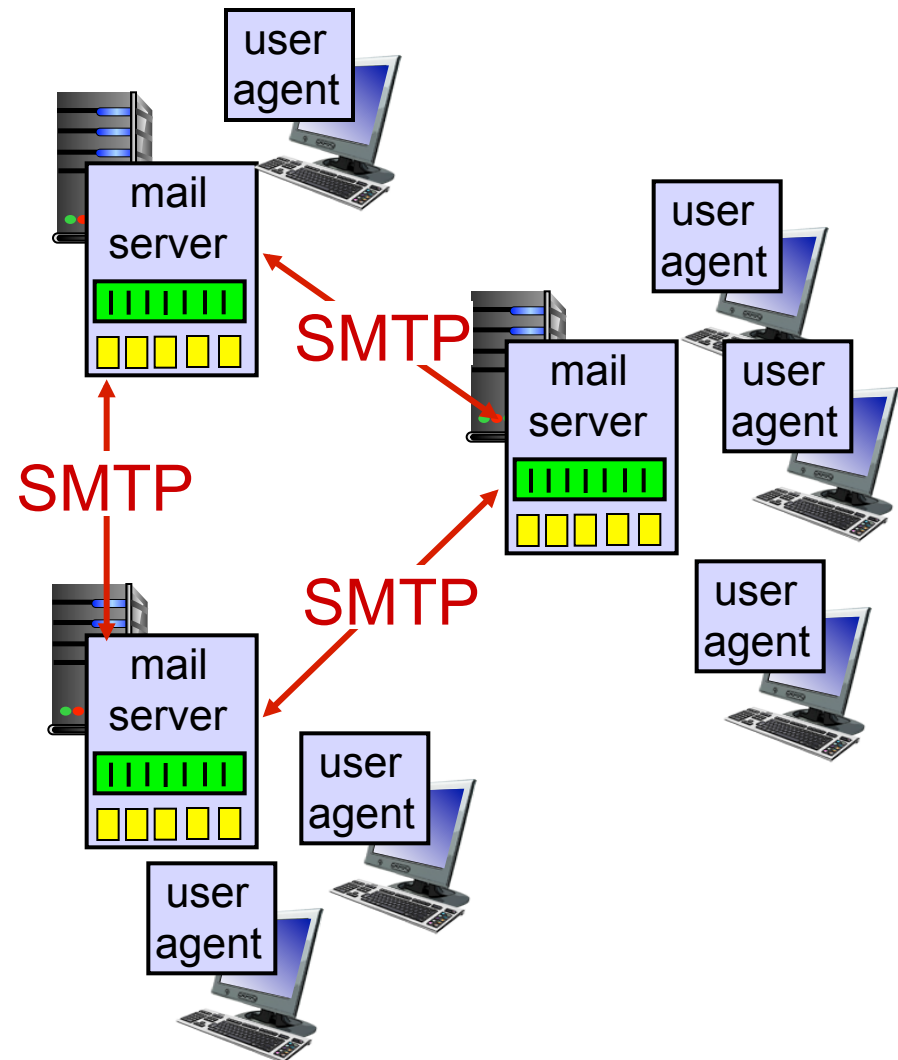
- a.k.a. “mail reader”
- composing, editing, reading mail messages
- e.g., Outlook, Thunderbird, iPhone mail client
- outgoing, incoming messages stored on server



# Electronic mail: mail servers

## mail servers:

- *mailbox* contains incoming messages for user
- *message queue* of outgoing (to be sent) mail messages
- *SMTP protocol* between mail servers to send email messages
  - client: sending mail server
  - “server”: receiving mail server

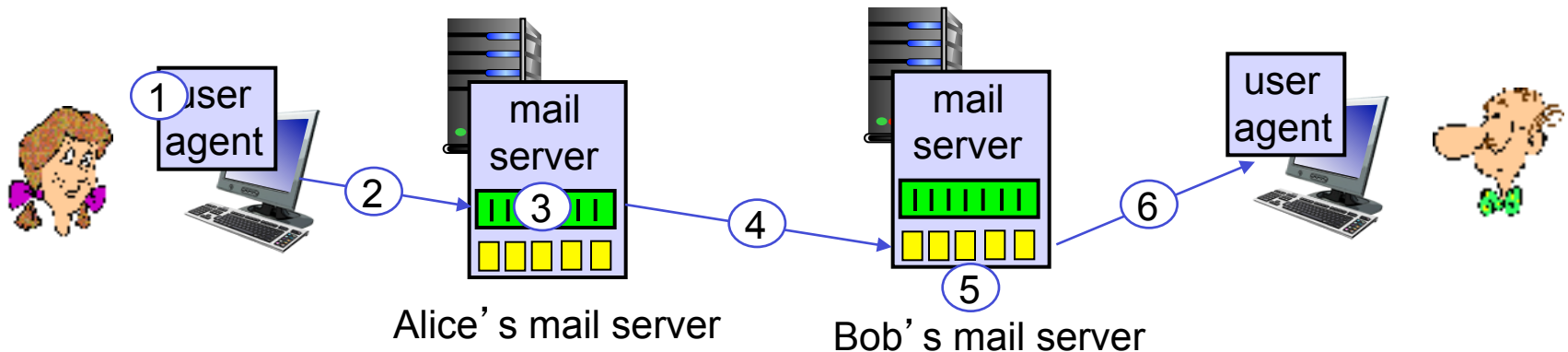


# Electronic Mail: SMTP [RFC 2821]

- uses TCP to reliably transfer email message from client to server, port 25
- direct transfer: sending server to receiving server
- three phases of transfer
  - handshaking (greeting)
  - transfer of messages
  - closure
- command/response interaction (like HTTP)
  - **commands:** ASCII text
  - **response:** status code and phrase
- messages must be in 7-bit ASCII

# Scenario: Alice sends message to Bob

- 1) Alice uses UA to compose message "to" bob@someschool.edu
- 2) Alice's UA sends message to her mail server; message placed in message queue
- 3) client side of SMTP opens TCP connection with Bob's mail server
- 4) SMTP client sends Alice's message over the TCP connection
- 5) Bob's mail server places the message in Bob's mailbox
- 6) Bob invokes his user agent to read message





# Sample SMTP interaction

```
S: 220 hamburger.edu
C: HELO crepes.fr
S: 250 Hello crepes.fr, pleased to meet you
C: MAIL FROM: <alice@crepes.fr>
S: 250 alice@crepes.fr... Sender ok
C: RCPT TO: <bob@hamburger.edu>
S: 250 bob@hamburger.edu ... Recipient ok
C: DATA
S: 354 Enter mail, end with "." on a line by itself
C: Do you like ketchup?
C: How about pickles?
C: .
S: 250 Message accepted for delivery
C: QUIT
S: 221 hamburger.edu closing connection
```

# Try SMTP interaction for yourself:

- `telnet servername 25`
- see 220 reply from server
- enter HELO, MAIL FROM, RCPT TO, DATA, QUIT commands

above lets you send email without using email client (reader)

# SMTP: final words

- SMTP uses persistent connections
- SMTP requires message (header & body) to be in 7-bit ASCII
- SMTP server uses CRLF.CRLF to determine end of message

## *comparison with HTTP:*

- HTTP: pull
- SMTP: push
- both have ASCII command/response interaction, status codes
- HTTP: each object encapsulated in its own response message
- SMTP: multiple objects sent in multipart message

# Mail message format

SMTP: protocol for exchanging email messages

RFC 822: standard for text message format:

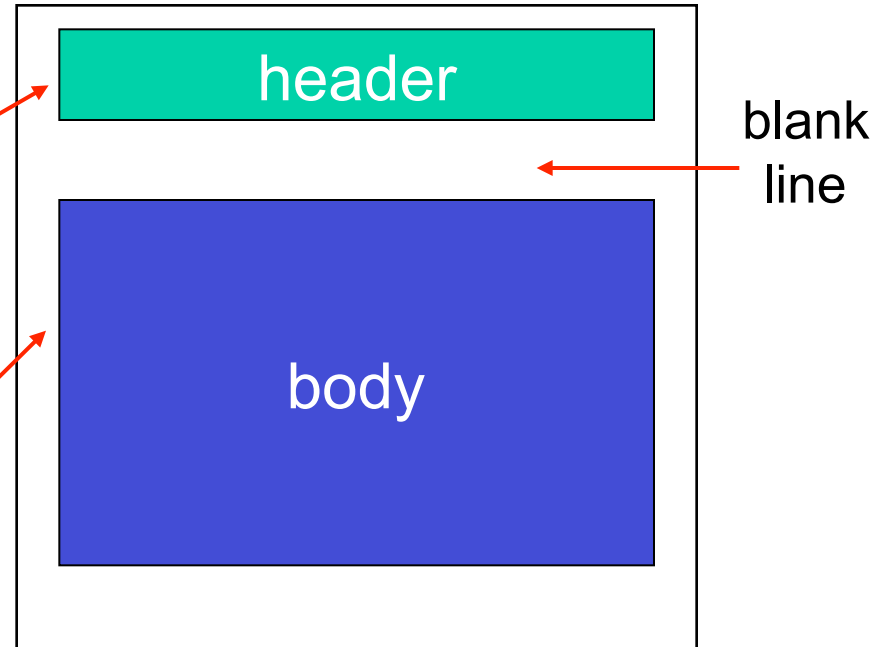
- header lines, e.g.,

- To:
- From:
- Subject:

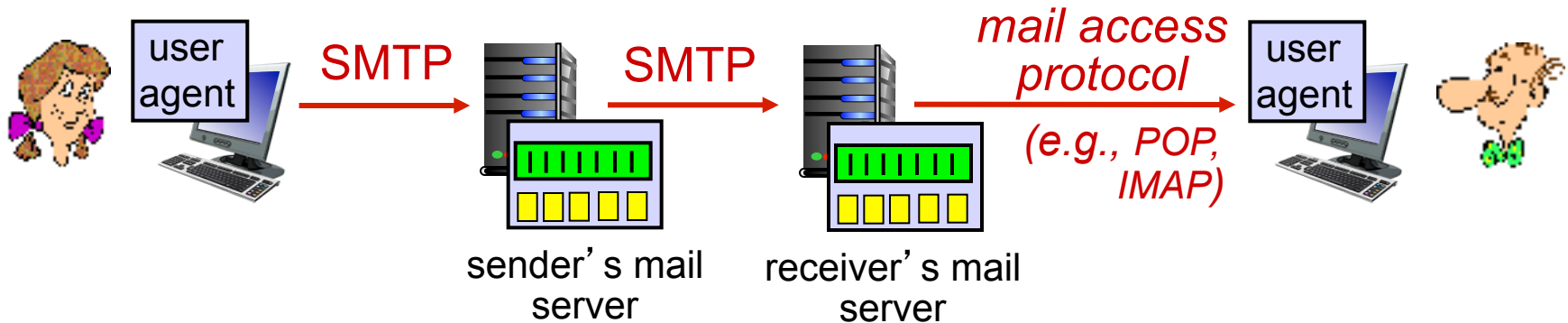
*different* from SMTP MAIL FROM, RCPT TO: commands!

- Body: the “message”

- ASCII characters only



# Mail access protocols



- **SMTP**: delivery/storage to receiver's server
- mail access protocol: retrieval from server
  - **POP**: Post Office Protocol [RFC 1939]: authorization, download
  - **IMAP**: Internet Mail Access Protocol [RFC 1730]: more features, including manipulation of stored messages on server
  - **HTTP**: gmail, Hotmail, Yahoo! Mail, etc.

# POP3 protocol

## *authorization phase*

- client commands:
  - **user**: declare username
  - **pass**: password
- server responses
  - **+OK**
  - **-ERR**

## *transaction phase, client:*

- **list**: list message numbers
- **retr**: retrieve message by number
- **dele**: delete
- **quit**

```
S: +OK POP3 server ready
C: user bob
S: +OK
C: pass hungry
S: +OK user successfully logged on
```

```
C: list
S: 1 498
S: 2 912
S: .
C: retr 1
S: <message 1 contents>
S: .
C: dele 1
C: retr 2
S: <message 1 contents>
S: .
C: dele 2
C: quit
S: +OK POP3 server signing off
```

# POP3 (more) and IMAP

## *more about POP3*

- previous example uses POP3 “download and delete” mode
  - Bob cannot re-read e-mail if he changes client
- POP3 “download-and-keep”: copies of messages on different clients
- POP3 is stateless across sessions

## *IMAP*

- keeps all messages in one place: at server
- allows user to organize messages in folders
- keeps user state across sessions:
  - names of folders and mappings between message IDs and folder name

# Chapter 2: outline

2.1 principles of network applications

2.2 Web and HTTP

2.3 electronic mail

- SMTP, POP3, IMAP

2.4 DNS

2.5 P2P applications

2.6 video streaming and content distribution networks

2.7 socket programming with UDP and TCP